

Nice area: The Ministry of Health is also located along Jalan Tugu.

Monuments to honour the dead

Star Metro m/s m 10 28/7/07

Concrete column replaced
by National Monument

CENOTAPH Road is the now Jalan Tugu in Kuala Lumpur but not many know of it.

In the 1960s, Jalan Tugu was Cenotaph Road named after a monument that was located at the intersection of the road and Victory Avenue which is now called Jalan Sultan Hishamuddin.

Jalan Tugu now connects to the roundabout that leads to the KL KTM Station opposite the National Mosque.

Along the road you will find the Ministry of Health, Town and Rural Planning Department and Jalan Cenderasari, which leads to the various parks in Kuala Lumpur like the Bird Park, Lake Gardens and Butterfly Park.

Many don't know that the first monument was not the one in the



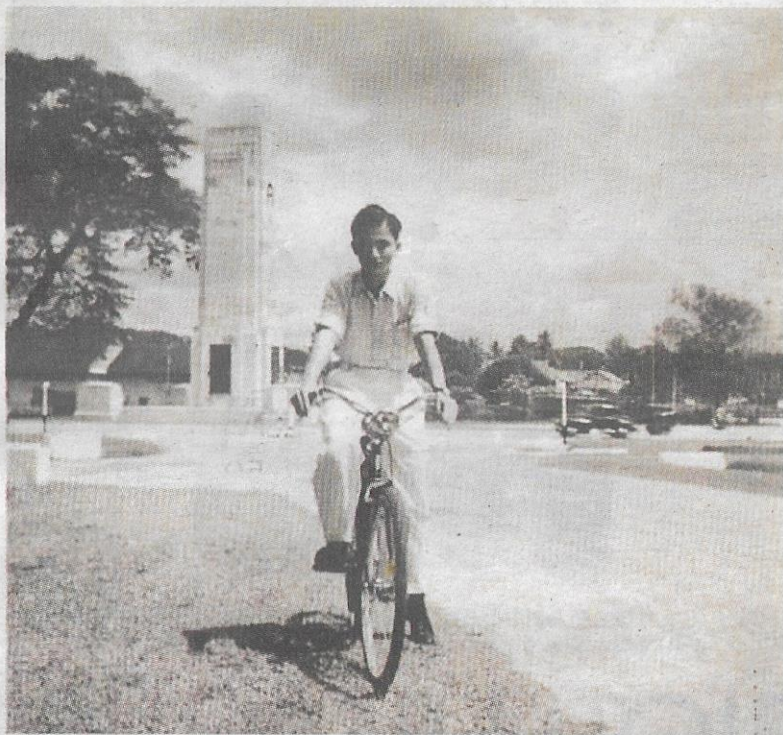
Jalan Tugu

form of human figures but was a tall concrete column that was situated in the middle of the roundabout.

The British administration set up the first monument, a 10m flat grass-covered ground to commemorate the wars and honour the fallen heroes.

It was moved to the present site at the National Monument, when a fly-over was constructed in 1964 connecting Jalan Sultan Hishamuddin and the parliament roundabout.

On the monument, it is written



Serene: A picture of Jalan Tugu taken in 1957.

Landmark: The National Monument which was officially opened on Feb 8, 1966.



DEDICATED TO
THE HEROIC FIGHTERS
IN THE CAUSE OF
PEACE AND FREEDOM

MAY THE BLESSING OF
ALLAH BE UPON THEM



مفرا بختیا
فر ویران غیر حوالہ انتوق
منکفد کما من داک سینا

مواک اللہ جو چو کرین
رحمتک انتو سرین

"To Our Glorious Dead" with dates of the First World War (1914-1918), Second World War (1939-1945) and the Emergency (1948-1960).

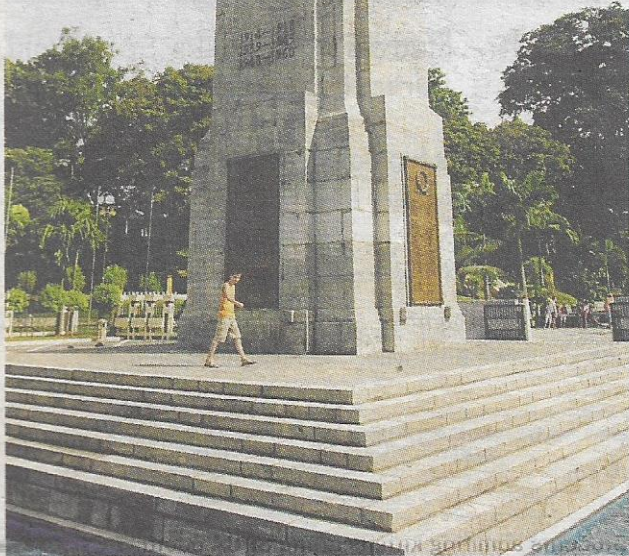
The monument was later replaced with the Tugu Negara or National Monument, an idea mooted by Malaysia's first Prime Minister Tunku Abdul Rahman Putra Al-Haj, in 1963.

The huge tall bronze figures of soldiers standing and supporting their fallen comrades, which is opposite Lake Gardens was officially opened on Feb 8, 1966. It was proclaimed a memorial park dedicated to the 11,000 people who died during the 12-year Emergency (1948-1960).

The bronze figures are the work of sculptor Felix de Weldon, who also did Washington's Iwo Jima Monument and it is regarded as the largest bronze monument grouping in the world.

In 1975, the RM1.5mil monument was renovated after it was damaged in an explosion believed to have been set off by suspected communist terrorists.

Every year on July 31, Warriors Day, the King, the Prime Minister and heads of military and the police would pay their respects to the fallen heroes by laying garlands at the monument.



No more:
The original monument set up by the British administration to commemorate the wars and honour the fallen heroes.