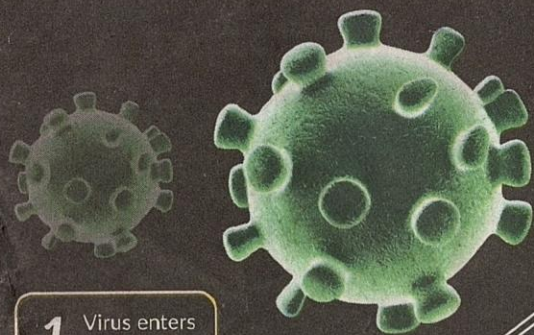


# Facing the CORONAVIRUS

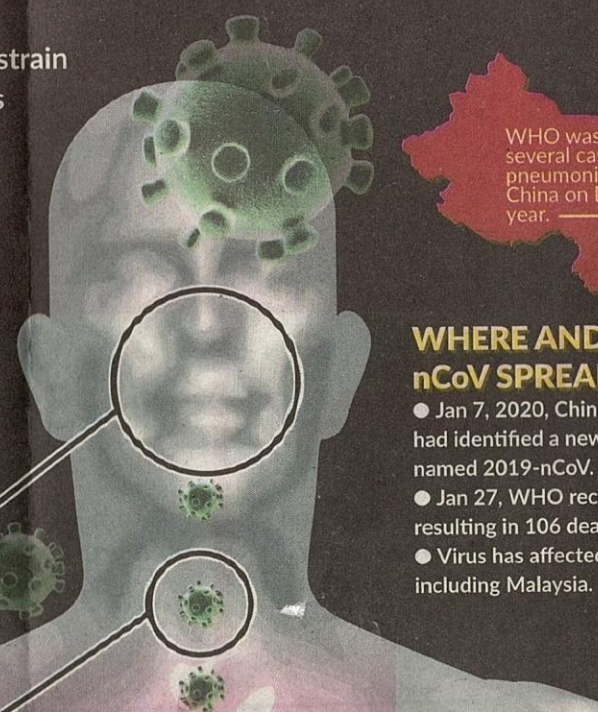
Coronaviruses (CoV) are a large family of viruses that cause a range of illness from the common cold to more severe diseases such as Middle East Respiratory Syndrome (MERS-CoV) and Severe Acute Respiratory Syndrome (SARS-CoV).

- Novel coronavirus (2019-nCoV) is a new strain
- Can have an incubation period of 14 days
- No vaccine yet for 2019-nCoV virus



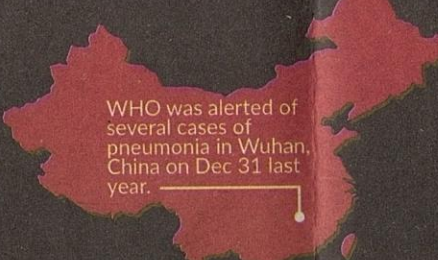
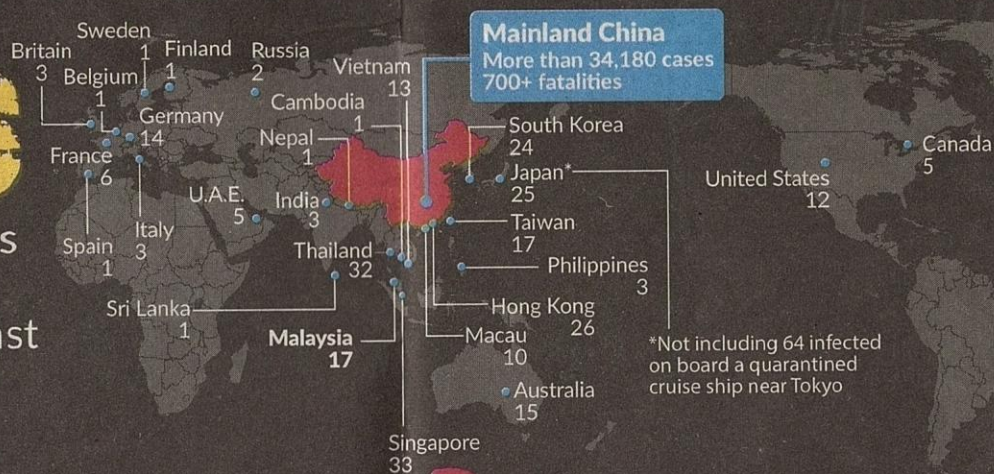
1 Virus enters through the nose and mouth

2 It then finds



## THE SPREAD OF THE CORONAVIRUS

Confirmed cases of 2019-nCoV as at Feb 8, 3.30pm Malaysian time



### WHERE AND HOW 2019-nCoV SPREADS

- Jan 7, 2020, Chinese authorities said they had identified a new virus, which was named 2019-nCoV.
- Jan 27, WHO recorded over 4,515 cases resulting in 106 deaths.
- Virus has affected China and 27 countries including Malaysia.

### Previous human coronavirus outbreaks in Asia

#### Severe Acute Respiratory Syndrome (SARS)

Outbreak period: 2002 - 2003  
 Origin: Guangdong, China  
 Countries affected: 26  
 Number of cases: 8,098  
 Deaths: 774

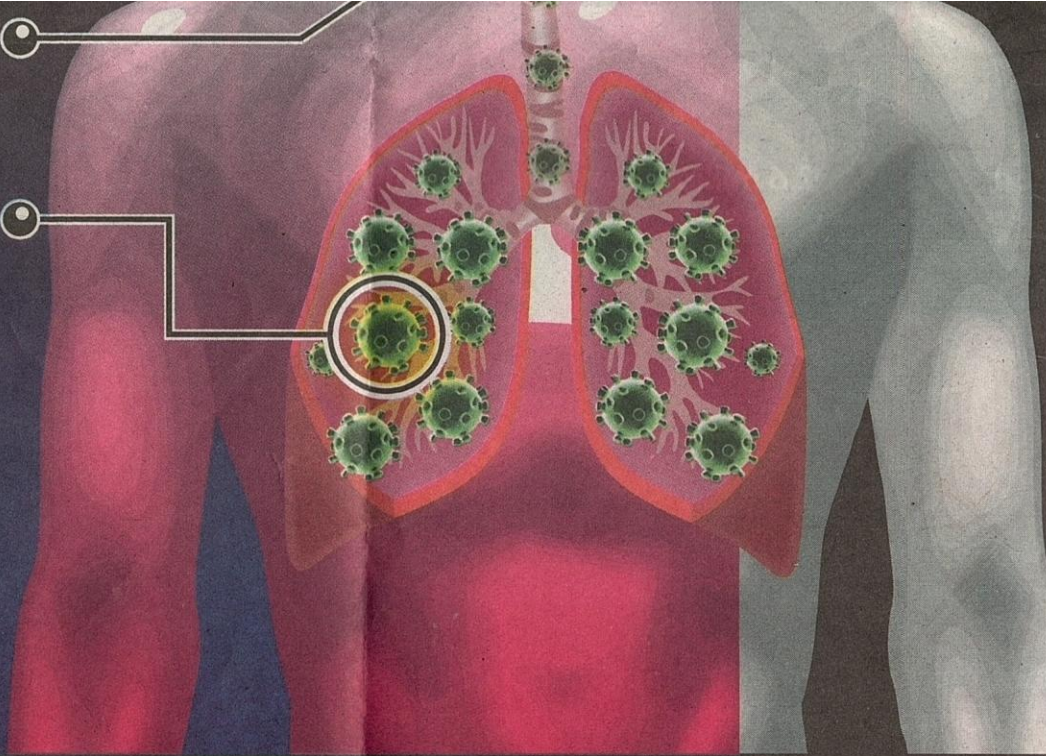
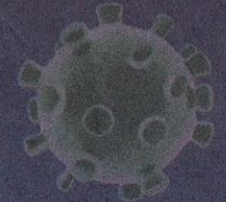
#### Middle East Respiratory Syndrome (MERS)

Outbreak period: 2002 - present  
 Origin: Saudi Arabia  
 Countries affected: 27  
 Number of cases: 2,494  
 Deaths: 858

Source: Associated Press, DXY. on, SCMP, Statista

2 a "host cell" in the respiratory system

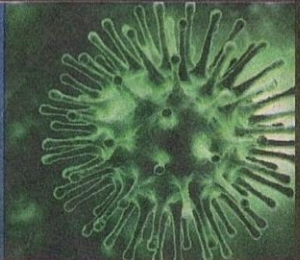
3 The host cell then bursts and infects other cells nearby



Source: WHO & Health Ministry of Malaysia

## Previous major outbreak

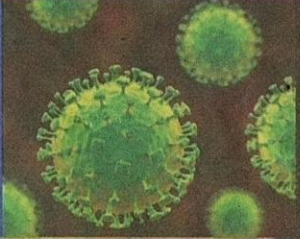
**H1N1**  
H1N1 flu is also known as swine flu. It caused 12,469 deaths in the US. Worldwide, up to 395,000 people died from the pandemic which lasted from 2009 to 2010.



**H5N1**  
Also known as bird flu. It caused 455 deaths between 2003 and 2019 worldwide.

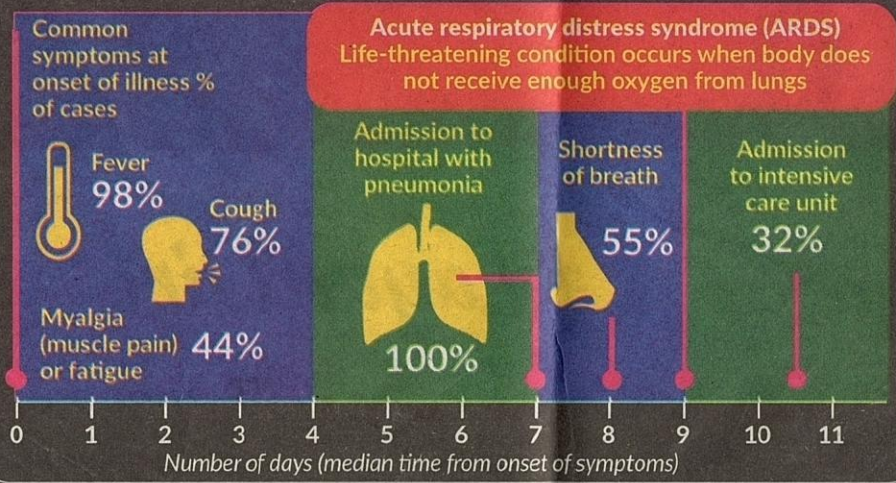


**Nipah Virus**  
The virus was first identified in Malaysia in 1998. It caused 265 cases of acute encephalitis with 105 deaths. The deadly disease nearly collapsed the pig-farming industry in Malaysia.



## SYMPTOMS OF CORONAVIRUS INFECTION

Timeline of severe cases of coronavirus from Dec 16-Jan 2 in Wuhan, China



## HOW TO PROTECT YOURSELF

- Frequently clean hands with hand sanitisers or soap and water
- Cover mouth and nose when coughing and sneezing
- Avoid close contact with anyone who has a fever and cough
- Seek medical help if you have a fever, cough and breathing difficulties
- Avoid direct unprotected contact with live animals and surfaces in contact with animals

### If the situation gets worse:

- Wear a face mask
- Limit travelling
- Avoid public gatherings and crowded places

### N95 FACE MASK

- Minimises the spread of the virus and infection
- Helps block large particle droplets, splashes, sprays or splatter which may have germs
- Not intended to be used more than once